



pearson  
ferrier

pearson ferrier  
**BLACK LABEL**

**9 MITTON CLOSE**  
**Bury, BL8 2LD**  
**£850,000**



# 9 MITTON CLOSE

## Property at a glance

- STYLISH MODERN FREEHOLD DETACHED FAMILY HOME
- UNRIVALLED VIEWS TO THE REAR ACROSS FISHING LODGE AND COUNTRYSIDE
- RENOVATIONS COMPLETED OVER THE LAST 5 YEARS
- FOUR BEDROOMS (ONE WITH ENSUITE)
- EXTENSIVE BALCONY ACCESSED FROM MAIN BEDROOM
- SUPERB REAR GARDENS WITH 2 GARDEN ROOMS PLUS BBQ STATION
- GARAGING & DRIVEWAY
- VIEWING RECOMMENDED
- EXCEPTIONAL RESIDENTIAL LOCATION
- NO ONWARD CHAIN

Nestled in the charming area of Mitton Close, Lowercroft, Bury, this exquisite detached house offers a perfect blend of comfort and elegance. With four spacious bedrooms and two well-appointed bathrooms, this property is ideal for families seeking a serene yet convenient lifestyle.

Upon entering, you are greeted by two inviting reception rooms, providing ample space for relaxation and entertaining. The heart of the home is the kitchen/family room with patio doors leading onto the rear patio and gardens. A standout feature of this home is undoubtedly the good-sized rear balcony, accessible from both the main bedroom and the second bedroom, where you can enjoy far-reaching views across the picturesque fishing lodge and the rolling countryside beyond.

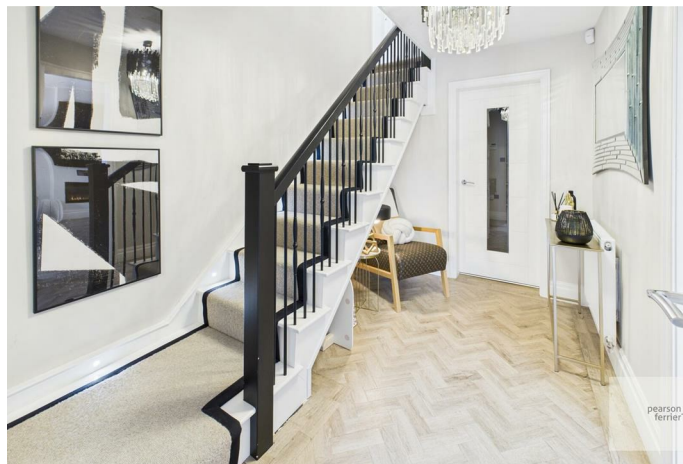
The extensive professionally landscaped rear gardens are a true highlight of this property. Designed for both beauty and functionality, the gardens feature two delightful garden rooms, perfect for hosting gatherings or enjoying quiet moments in nature. Additionally, the outdoor BBQ station invites you to indulge in al fresco dining during the warmer months.

For those with vehicles, the property offers parking for up to three cars plus the garage, ensuring convenience for you and your guests. This home not only provides a comfortable living space but also a lifestyle enriched by its stunning outdoor features and tranquil surroundings.

In summary, this remarkable property in Lowercroft is a rare find, combining spacious living areas, beautiful gardens, and breathtaking views. It is an ideal choice for anyone looking to settle in a peaceful yet accessible location. Don't miss the opportunity to make this house your home.



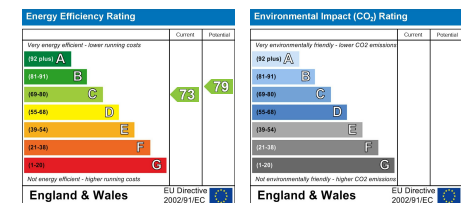




Bury Office  
 435/7 Walmersley Road, Bury, Lancashire, BL9 5EU  
 Telephone: 0161 764 4440  
 Fax: #  
 Email: bury@pearsonferrier.co.uk

[www.pearsonferrier.co.uk](http://www.pearsonferrier.co.uk)

All statements contained in these particulars are for indicative purposes only and are made without responsibility on the part of Pearson Ferrier and the vendors of this property and are not to be relied on as statements or representations of fact. Potential purchasers should satisfy themselves by inspection or otherwise as to the accuracy of such details contained in these particulars.



pearson ferrier  
**BLACK LABEL**